

Decision-making structures



Headquarters implements the Committee's policy and provides the services necessary for Scouting's development.

The decision-making structure within The Scout Association is made up of volunteer committees who work with the staff at Headquarters.

The Scout Association is governed by the Council of The Scout Association (membership as detailed in the chart overleaf). The Committee of the Council maintains Headquarters whose various departments implement the Committee's policy and to provide the services and materials necessary for the development of Scouting. The Committee of the Council delegates some of its powers to an Executive Committee and to four main sub-Committees:

- The Chief Scout's Committee
- Programme and Development sub-Committee
- General Purposes sub-Committee
- Finance sub-Committee.

In turn, various National Support Teams headed and supported by National Commissioners advise the sub-Committees.

Committee structure of the Headquarters of The Scout Association

The Council of The Scout Association

Ex Officio • President • Chief Scout • Treasurer • Chief Executive • National Commissioners • Chairmen of National Boards • Chief Commissioners of England, Scotland, Wales and Northern Ireland • International Commissioner • Chief Commissioners of Overseas Branches • County/Area Commissioners
Nominated Members Each Scout County and Overseas Branch may nominate one Member for every 10,000 Members of the County/Branch
Nominated Youth Representative Each County Nominates one youth representative age 18 – 25 years **Elected Members** The Council may include up to 60 other persons (three may be employees of The Scout Association)

The Committee of the Council

Ex Officio • Chief Scout • Treasurer • Chief Executive • Chief Commissioners of England, Scotland, Wales and Northern Ireland • International Commissioner **Elected Members** 12 Members of The Council elected at AGM **Elected Youth Representatives** Three youth representatives of the Council Senior Management Team **Co-opted Member(s)** • The Committee may co-opt members of The Council **Right of Attendance** • National Commissioners • County/Area Commissioners • Commissioners representing Overseas Branches **Invited to Attend** • Senior Management Team • Chief Guide **Note: The number of Ex officio and Co-opted Members cannot exceed the total number of Elected Members**

Chief Scout's Committee

Ex Officio

- Chief Scout
- Chief Commissioners of England, Scotland, Wales and Northern Ireland
- International Commissioner
- Chief Executive

The Executive Committee

Ex Officio • Chairman of the Committee of the Council • Senior Management Team • Chief Scout

- Treasurer • Chief Executive • Chairman of the three main sub-Committees **Non voting Members**
- Senior Management Team **Right of Attendance**
- Members of the Committee of the Council

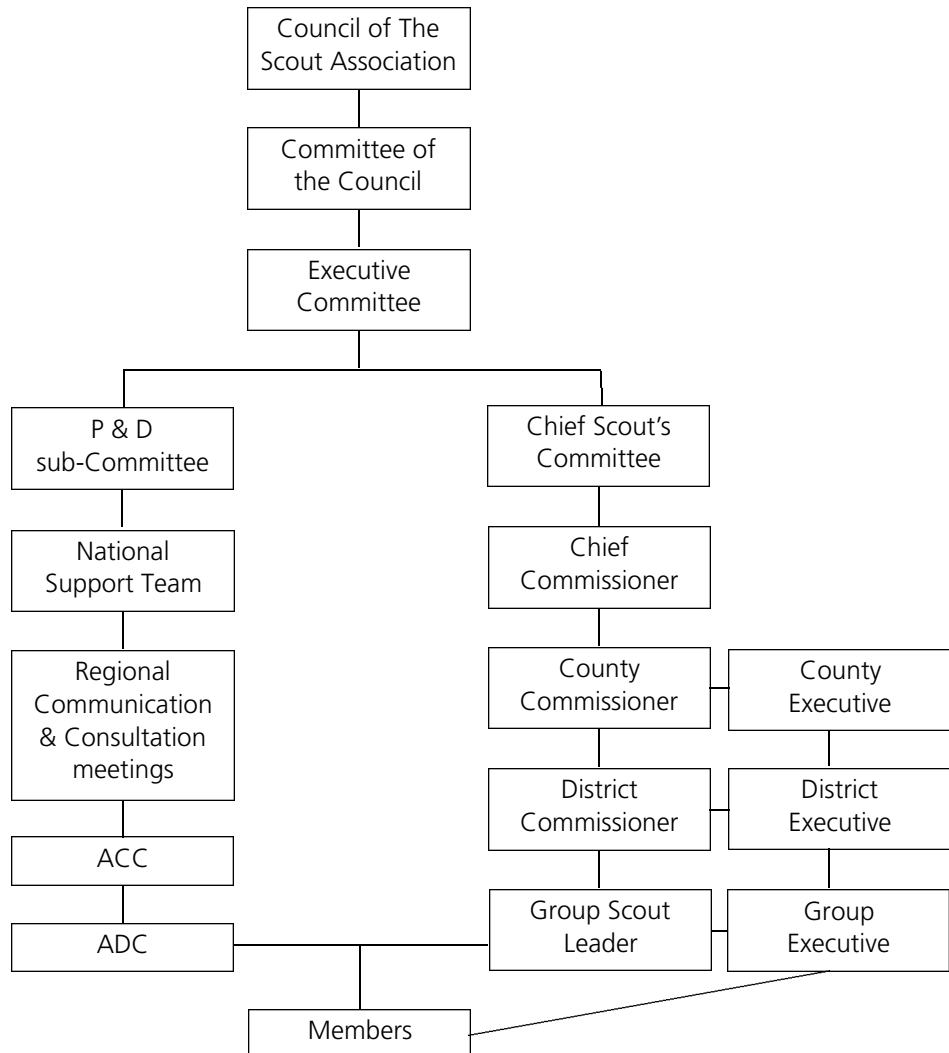
Programme and
Development sub-Committee

General Purposes
sub-Committee

Finance
sub-Committee

How do we get our opinions heard at national level?

There is a defined structure within the Association so that all Members: young people, Leaders, line managers and other supporters are able to influence the Association's policy making at all levels.



The above diagram shows the route of communication within The Scout Association. Individual Members can choose to express their opinions through the line management structure and/or through the Section supporter route. These opinions are fed as appropriate into Headquarters sub-Committees and are taken forward to the other Committees and are decided on as policy by the Committee of the Council.